

School: SOMAHS	Level: Bachelor	Invigilator's Sign:
Program: B. Pharmacy	Year/Part: III/II	Superintendent's Sign:
Subject: Pharmacy Practice (BP 602)		Code No.

----- ✂ ----- ✂ ----- ✂ ----- Code No.

GROUP A (Multiple-Choice Questions)	[5x1=10]	Time: 10 Minutes
--	-----------------	-------------------------

- i This group contains 10 multiple-choice questions (MCQs).
- ii Answers must be marked on the MCQ Answer Sheet. Code No.:
- iii You may use the main answer sheet for rough work.
- iv Marks will not be awarded for answers with cutting, erasing, overwriting, or multiple shaded options.
- v The MCQ question paper must be returned along with the MCQ answer sheet.

1. The primary goal of pharmacy practice is to:
 - a) Promote rational use of medicines b) Increase medicine sales
 - c) Prepare cosmetics d) Conduct animal experiments

2. HEPA filters are used in clean rooms to:
 - a) Add moisture to air b) Remove microorganisms and particles from air
 - c) Produce oxygen d) Increase airflow temperature

3. TPN admixtures are usually stored under:
 - a) sunlight b) high temperature c) refrigeration d) open shelf

4. Poison information services are generally available:
 - a) emergency b) office hour c) once a day d) 24 hrs a day

5. Intentional non-adherence occurs when a patient:
 - a) Forgets a dose accidentally b) avoids taking medication
 - c) misreads the label d) loses the medicine

Multiple Choice Questions' Answer Sheet

Marks Secured: _____

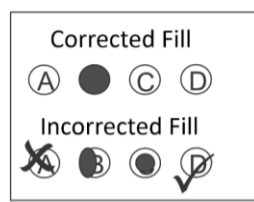
In Words: _____

Examiner's Sign: _____ Date: _____

Scrutinizer's Marks: _____

In Words: _____

Scrutinizer's Sign: _____ Date: _____



1. (A) (B) (C) (D)	6. (A) (B) (C) (D)
2. (A) (B) (C) (D)	7. (A) (B) (C) (D)
3. (A) (B) (C) (D)	8. (A) (B) (C) (D)
4. (A) (B) (C) (D)	9. (A) (B) (C) (D)
5. (A) (B) (C) (D)	10. (A) (B) (C) (D)

Manmohan Technical University
Office of the Controller of Examinations

Exam Year: 2083, Asar

School: SOMAHS	Level: Bachelor	Time: 1.5 Hours
Program: B.Pharmacy (M0del Questions)	Year/Part: III/II	Full Marks: 25
Subject: Pharmacy Practice (BP 602)		

- ✓ Candidates are required to give their answers in their own words as far as practicable.
- ✓ The figures in the margin indicate **Full Marks**.
- ✓ Assume suitable data if necessary.

GROUP A (Multiple-Choice Questions are provided on separate sheet) [5*1=5]

GROUP B (Problem Based Question) [1*6=6]

1. A prescription contains the patient's name and medicine name but does not mention the dose, frequency, or duration of therapy.
 - a) Identify the missing parts of the prescription. (1)
 - b) Should the pharmacist dispense the medicine immediately? Give reason (2)
 - c) What steps should be taken before dispensing? (3) (3)

GROUP C (Long Answer Questions – Attempt Any Two Questions) [4×2=8]

1. Write short notes on barriers to effective counseling and strategies to overcome barriers
2. Define TPN. Differentiate between hemodialysis and peritoneal dialysis
3. Discuss steps in filling ADR form

GROUP D (Short Answer Questions –Attempt any Three) [3*2 = 6]

1. Define patient counselling. What are counselling aids .
2. Discuss in brief on importance of taking medication history
3. Write short note on preparation of aseptic products
4. Write down patient advice and labelling information in case of dispensing an ophthalmic product

***** All the Best *****